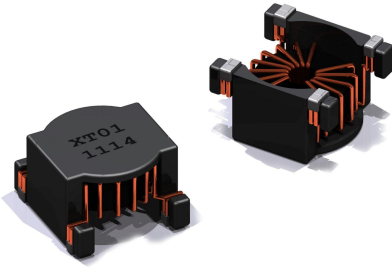


XT Series

Low Profile Signal and Gate Drive Transformers



- Height: 3.25 mm (Ref)
- Footprint: 5.67 mm (Ref) x 5.11 mm (Ref)
- Frequency Range: 100 kHz to 5 MHz
- Suitable for Pick & Place Applications
- The XT04 is designed to work with KIT_1EDB_AUX_SiC isolated gate driver IC.

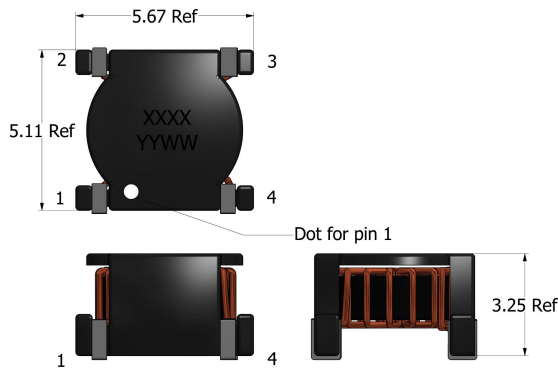
APPLICATIONS

Isolated Pulse and Signal Transformers
DC/DC Converters
AC/DC Converters

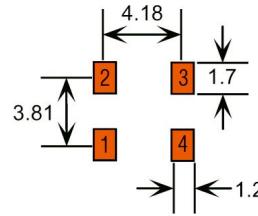
PACKAGING

Reel Diameter: 13"
Reel Width: 16 mm
Pieces/Reel: 1400

Mechanical Drawing



Recommended PCB Layout



Schematic



All dimensions are in mm

Electrical Specifications @ 25°C - Operating Temperature Range¹: -40°C to +130°C

Part Number	Turns Ratio (TR)	Drive Inductance ² (μH, Min)	DCR Pri:Sec (mΩ, Max)	Leakage Inductance (nH, Max)	ET Product ⁵ (V-μs, Max)	Hi-Pot Drive:Gate
XT01	1:1	100	320:320	150	10.00	2250 V _{DC}
XT02	1:1	140	350:350	150	12.80	120 V _{DC}
XT03	1:1	31	120:120	600	3.75	2350 V _{DC}
XT04	1:1	86	140:140	100	6.25	2350 V _{DC}

- Operating Temp. Range:** The combination of ambient temperature and temperature rise.
- Drive Inductance:** Tested at 100kHz, 0.1 V_{RMS}
- Flammability Standard:** Meets UL 94V-0.
- ET Product:** The maximum ET is based upon a flux density of 2200 Gauss at 25°C.

$$ET = E_p / 2f$$

Where as,

$$E_p = \text{Primary Voltage (V)} \quad f = \text{Frequency (Hz)}$$

- Suitable for bipolar applications only.

RoHS COMPLIANT



CUSTOM SOLUTIONS AVAILABLE



Specifications subject to change without prior notice.

TEL.: 800-729-2099

www.icecomponents.com

October 27 2022 - XT Series

Mouser Electronics

Authorized Distributor

Click to View Pricing, Inventory, Delivery & Lifecycle Information:

[ICE Components:](#)

[XT04](#)